

Total Distance  
**4685 km**

Total Time  
**6:11**



*The next generation of in-flight,  
real-time 3-D moving maps.*

# Airshow<sup>®</sup> 4000

MOVING MAPS

**Rockwell  
Collins**

Building trust every day

# Stay engaged and aware in the air.

*In today's world, things happen faster than ever. You can't afford to be out of touch – even at 40,000 feet. Rockwell Collins' Airshow® 4000 moving maps offer you a host of features, including options that let you customize your content selection from a menu of the most trusted names in dynamic media delivery.*

## Are we there yet?

That classic traveling question was the original motivation behind our first Airshow moving maps system. Since its introduction, we have continued to build on our experience and expertise to keep our systems at the forefront of information delivery capabilities, while making every flight more enjoyable. Airshow 4000 will turn “Are we there yet?” into “We're here already?”

## An inviting look and feel

Airshow 4000's 3D moving map displays and Version 2 system software provide an exciting level of visual realism. With its rich array of features and high-performance capabilities, Airshow 4000 represents the best of business aviation's most popular 3D moving map system.

## Broadband enabled – live news and more

Airshow 4000 is compatible with today's most popular IP-based satellite broadband connectivity solutions. This means you get the fastest and most reliable content delivery right to your aircraft's cabin. Airshow 4000 offers a variety of programming options, including Bloomberg, the BBC, WSI Intellicast® Cabin Weather, SportsTicker, The Wall Street Journal and WSI Flight Deck Weather. All of your selected content is continually updated, ensuring that the information you need is available whenever and wherever in the world you need it.

---

### Key features

- ▶ Global maps with exceptional detail and coverage
- ▶ Innovative time and flight status displays
- ▶ Realistic day/night views on all 3D maps
- ▶ A “head-up” display that gives you a pilot's-eye view of the flight
- ▶ High-speed broadband capability for fast downloading of Airshow Network updates
- ▶ Compatibility with our Airshow® Mobile application, enabling passengers to enjoy Airshow moving maps on their favorite iOS and Android™ tablets and smartphones

*Airshow 4000 keeps you informed, entertained and in touch – from takeoff to touchdown.*

## 3D moving maps

Airshow 4000 goes well beyond advanced communications technology. Its high-powered, proprietary map engines offer you the greatest degree of flexibility and viewing options. These include point-of-interest panels, real-time day/night animation on 3D maps, 3D relative location indicator, 3D time zone map and additional resolutions for all worldwide maps to enhance each passenger's traveling experience.

Rounding out the system's moving map capabilities is a host of popular features. These include world clocks, flight instrument panels, tabbed-style navigation menus, Hi-Focus, 3D zoom and perspective views with an information ticker.

## Unmatched versatility and flexibility

As an industry-leading original equipment manufacturer of avionics and cabin electronics, Rockwell Collins understands the value and importance of your business aircraft. That's why our Airshow 4000 is compatible with virtually every cabin management system installed today. We make it easy to stay connected to the world below no matter what type of aircraft and cabin management system you fly.

Airshow 4000's design flexibility extends to everyone who flies on your aircraft. Because the system is compatible with our Airshow Mobile app, every passenger on your flight can stay engaged and aware on their own iOS or Android mobile device. By simply downloading the app, they can explore and enjoy Airshow moving maps anywhere in the cabin from the convenience of their tablet or smartphone.



**Point-of-interest panel**

New city guide content will be presented in an information panel similar to the flight information today. The point-of-interest panel will feature images with captions and interesting information on various points along the flight route.



**Real-time day/night 3D maps**

On the 3D maps, the sky scenery indicates time of day. Smooth, graphical transitions will represent dawn, day, dusk and night.



**Flight information page**

Moving map displays flight information parameters based on real-time data from the flight navigation system. Choose from 25 parameters for customized display.



**Flight instrument panel in Version 2 or Classic style**

Replicate the look of a flight instrument panel and view real-time flight information using available data.



**Head-up display**

Virtual pilot's view using the aircraft's flight and navigation information.



**Place names for Hi-Focus maps**

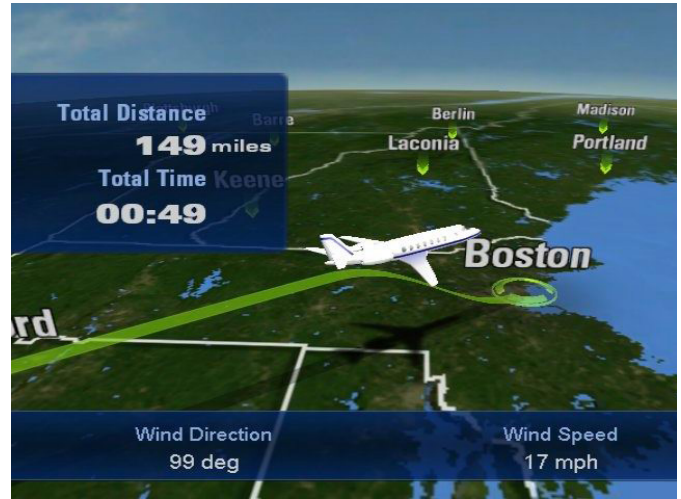
These high-resolution maps include an extensive list of place names and points of interest, such as museums, theme parks, neighborhoods, airports and other interesting locations.

## In-flight information



### Safety briefings

Airshow 4000 reduces crew workload with automated briefings that feature animation, audio and live-action video. Operators can also choose to customize their briefings for specific aircraft..



### Flight progression map

Throughout your flight, a variety of 3D and 2D map displays show various progression views, including preflight route, total route map and distance traveled.



### Relative location indicator

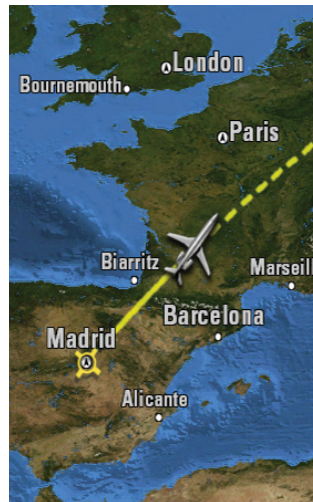
Airshow 4000 can display the distance to cities or points of interest, relative to your aircraft's position. It can also display fixed points, such as Mecca or your corporate headquarters.



### World explorer

Interesting facts are waiting to be discovered all along the route, with an expanded display for points-of-interest information within the interactive world explorer.

# Personalized maps



## Map styles

Maps use state-of-the-art photo imagery with unprecedented color and realism. Custom place names and points of interest may be added.



## Time zone globe map

Traces the sun's path throughout a 24-hour period.



## World clocks

View time zone information anywhere around the globe. Customize to the cities of your choice; you can view the time in analog or digital format.



## Multilingual maps and information

Airshow 4000 can be configured to display en route cities and flight information pages in a variety of languages.

# News and entertainment

## Real-time weather, sports and stocks

Navigate through the latest sources, including Bloomberg, the BBC, WSI Intellicast Cabin Weather, SportsTicker and The Wall Street Journal. They can also be toggled to full-story mode or configured for automatic sequence. Quickly download updates with broadband connectivity.



## Airshow content and services

### MyAirshow.net

With MyAirshow.net, you can personalize network information and data specific to your aircraft. Customize stocks, sports and weather updates and view and edit personal account information – all from your browser.

# Seamless integration. Straightforward installation.

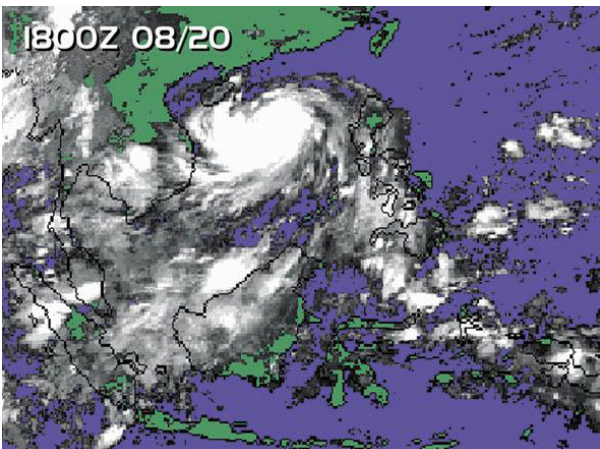
## Broadband connectivity

The Airshow 4000 supports IP-based connectivity over high-speed and broadband data systems. This capability enables faster and more reliable connections and content downloads.

A host of input ports are available on the Airshow 4000 to make it easy to run diagnostics and system checks, as well as to load new software. Two independent video streams enable information display on the flight deck or in a separate zone within the cabin.

The system updates the flight deck with WSI Doppler radar images. Pilots can control the system using a digital cockpit controller or flight deck controller. With the entry of arrival airports, the system can plan destination information and retrieve flight data.

System users can sequence stored weather images to form a trend analysis of storm cell direction, intensity and velocity. Pilots also can activate audio briefings and access satellite weather at any time, further enhancing the flow of information.



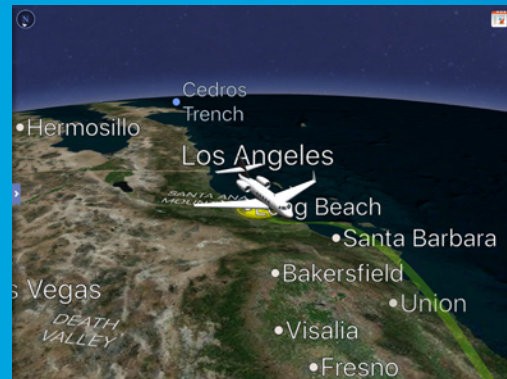
National satellite weather

## Airshow Mobile application

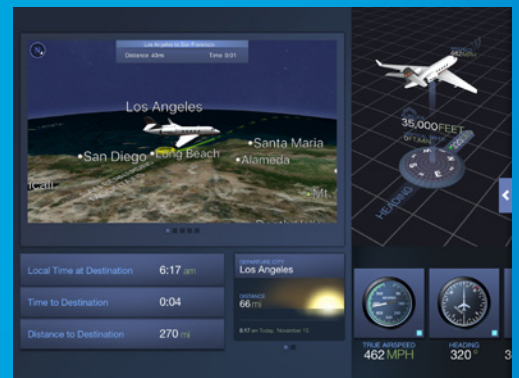
With this optional feature, you can access Airshow on any of your iOS® and Android™ devices. Stay informed on your journey in a much more personal way. Tap and swipe menus and views for an interactive, on-demand experience.

With the Airshow Mobile app on your device and a wireless access point on your aircraft, you're set. No more relying on preconfigured cabin broadcast displays or another traveler's preferences. You can select your own preferences for time format, units of measurement and cities for the 3D relative location indicator as well as the world clock feature.

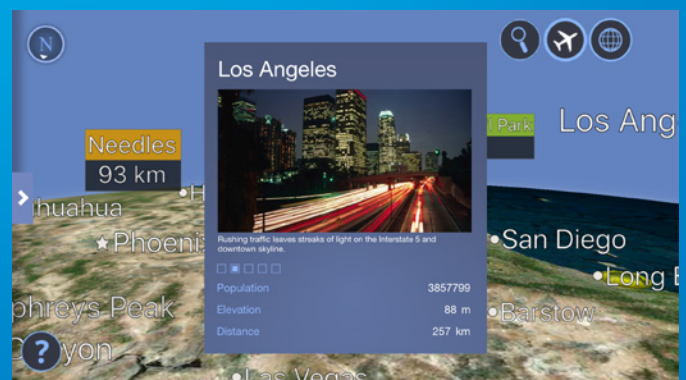
Further personalize your Airshow Mobile experience with custom options. For example, the aircraft on your Airshow screen can have a paint scheme that matches your real aircraft. You also can add logos and change languages, so you'll feel right at home as you explore map destinations.



Mid-flight



Command center (tablets only)



Points of interest

Building trust every day.

Rockwell Collins delivers innovative aviation and high-integrity solutions that transform commercial and government customers' futures worldwide. Backed by a global network of service and support, we are deeply committed to putting our solutions to work for you, whenever and wherever you need us. In this way, working together, we build trust. Every day.

For more information, contact:

Rockwell Collins  
1733 Alton Parkway  
Irvine, CA 92606  
+1.714.929.3000  
[csmarketing@rockwellcollins.com](mailto:csmarketing@rockwellcollins.com)  
[rockwellcollins.com](http://rockwellcollins.com)