

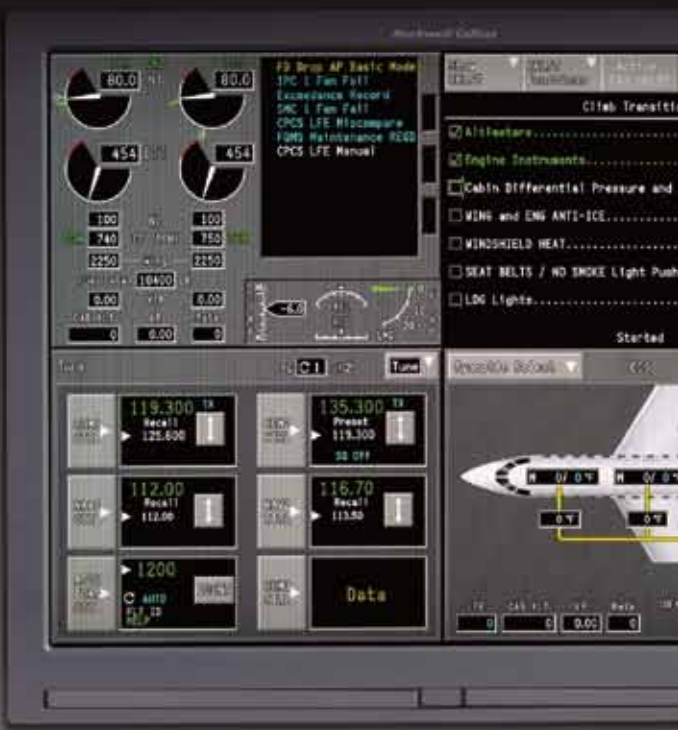
PRO LINE FUSION® ADVANCED AVIONICS

Discover a new level of situational awareness
on the Gulfstream® PlaneView 280™ flight deck.





flexible, adaptable integration



extensive situational awareness

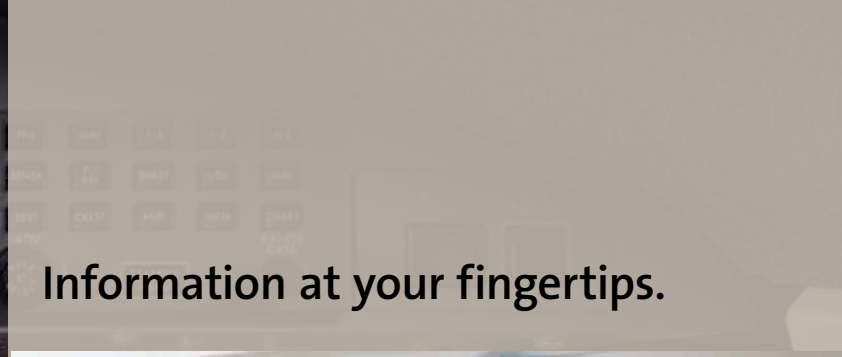




information enabled



empowering human interface



Information at your fingertips.



Effectively manage the flow of flight information while experiencing natural, safety-enhanced, eyes-forward flying. Pro Line Fusion® advanced avionics from Rockwell Collins builds on our proven Pro Line platform with innovative technologies to transform your flight experience.

Now you have everything you need, when you want it, at your fingertips and in your forward field of view.

Enhance situational awareness and operational efficiency with your new flight deck equipped with our Pro Line Fusion® advanced avionics.

Windowed displays help access the system's full power.



Moving map

Integrates the terrain database with real-time flight information for greater situational awareness, overlay weather, airways, nav aids, and more on the moving map especially in low visibility conditions and unfamiliar territory. All delivered with the enhanced safety of natural, eyes-forward flying.



Graphical flight planning

Easily create and modify flight plans with Fusion's graphical user interface. Graphical flight planning capability in concert with interactive map symbols enables point-and-click navigation on a moving map for ease of use. The interactive dialog boxes and map overlays further optimize the data presentation.



Integrated Flight Information System

Access a variety of flight information in real time with our Integrated Flight Information System (IFIS). View electronic charts, enhanced map overlays and datalink graphical weather features on the aircraft's multifunction displays, giving the crew a higher level of operational efficiency and convenience – all your flight information at your fingertips.



Synoptics

The importance of monitoring aircraft systems is made easy with the Fusion flight deck. Our smart checklists and advanced synoptics allow pilots to step through normal, abnormal and emergency procedures and monitor systems all in a central location while maintaining an eyes-forward view.

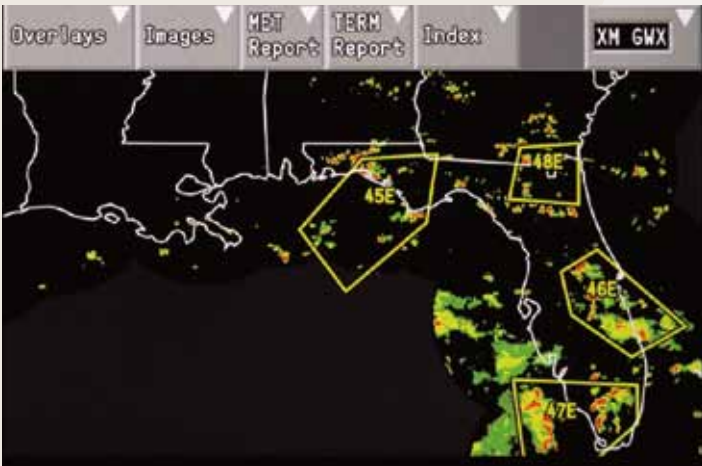
Further enhance your Gulfstream G280™.

AVAILABLE OPTIONS



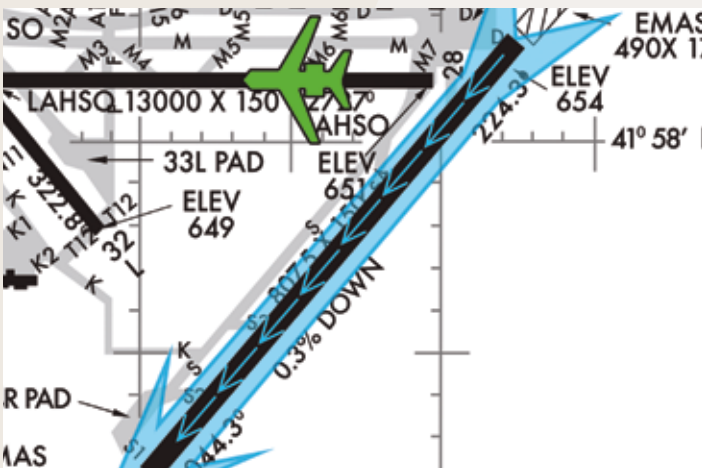
Head-up Display Guidance

With the HGS-6250 you improve mission flexibility, situational awareness and flight precision for your Gulfstream. Aircraft flight path and attitude symbols overlay the outside scene enhancing situational awareness, improving energy management and increasing touchdown precision. With the advanced LCD- and LED-based technology of the Rockwell Collins Head-up Guidance System (HGS™) combined with live infrared imagery from the Gulfstream EVS II™, you have increased flexibility to land more places, more often, in more weather conditions.



XM Satellite Weather (for IFIS-equipped aircraft)

A continuous broadcast weather service offered in the continental United States, XM Satellite Weather supports strategic flight decisions as an augment to the baseline datalink graphical weather system. Provides animated NEXRAD and satellite imagery, winds aloft, graphical and text METARS, graphical and text SIGMETS, textual AIRMETS and TAFs, lightning and TFR locations.



Surface Management System

Provides automated checks and aural advisories to the flight crew, and adds a visual overlay that highlights the target runway on the airport chart display. Alerts include: takeoff or landing runway is too short; aircraft is initiating a takeoff or aligning to land on a surface that is not a runway; and takeoff runway disagrees with the departure runway designated in the flight management system.

Aural Alerts enhance runway safety

Condition: Takeoff not on a runway

“Not a runway, not a runway.”

Condition: Landing runway too short

“Runway too short, runway too short.”

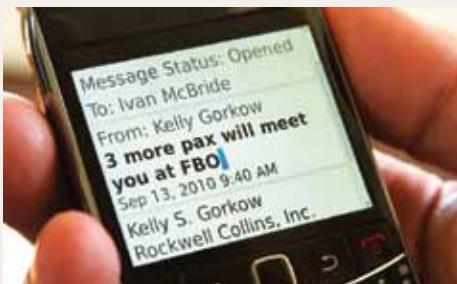
Fusion supports runway safety awareness by displaying aircraft position during taxi. Should an unsafe takeoff or landing operation occur aural alerts “not a runway” and other annunciators provide additional situational awareness.

Advanced, today and always.

Ascend™ flight information solutions

Fusion-equipped aircraft can take advantage of extensive operational efficiencies with Ascend from Rockwell Collins. Ascend offers a comprehensive suite of services, online tools and personalized support for seamless pre-flight, in-flight, on-ground and post-trip operations. Ascend's globally networked resources include:

- › Trip Quotes
- › Flight Planning
- › GPS RAIM Prediction
- › Runway Analysis
- › Flight Manager™
- › Regional Trip Support
- › International Trip Support
- › Flight Watch
- › Ascend Fuel
- › Fuel Stop Analyzer
- › Ascend Weather
- › Datalink
- › Ascend Card Services



Intercontinental package

Enhances availability of the systems most commonly used for operation in oceanic airspace. Adds a third advanced flight management system, a second high-frequency communications system, a third navigation receiver, a second radio altimeter and a second datalink system to your G280.

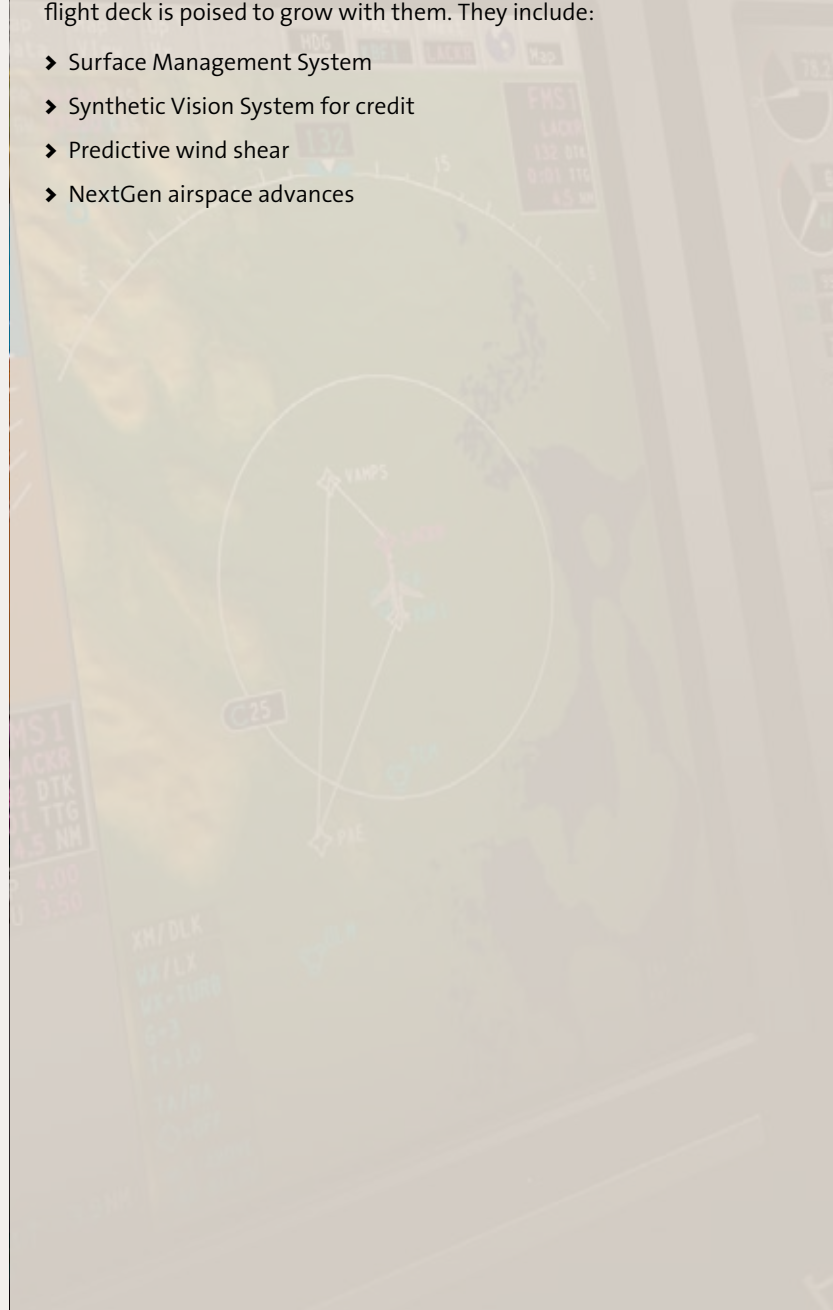
Open system architecture

Fusion's versatility, scalability, efficiency and cost effectiveness stem in part from its open system architecture. Based on industry standards, Fusion's architecture enables it to deliver advanced performance throughout your avionics' life cycle.

As new technologies become available, upgrades or modifications to Fusion can be as easy as the replacement of separate modules within the flight deck or through simple software downloads. You enjoy enhanced capabilities while keeping costs low.

Exciting new technologies are on the horizon, and your Fusion flight deck is poised to grow with them. They include:

- › Surface Management System
- › Synthetic Vision System for credit
- › Predictive wind shear
- › NextGen airspace advances



Building trust every day.

Rockwell Collins delivers smart communication and aviation electronic solutions to customers worldwide. Backed by a global network of service and support, we stand committed to putting technology and practical innovation to work for you whenever and wherever you need us. In this way, working together, we build trust. Every day.

For more information contact:

Rockwell Collins
400 Collins Road NE
Cedar Rapids, Iowa 52498
319.295.4085
email: csmarketing@rockwellcollins.com
www.rockwellcollins.com